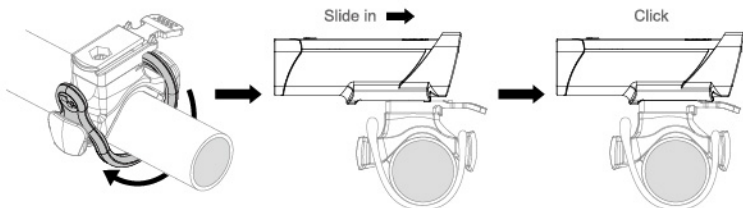


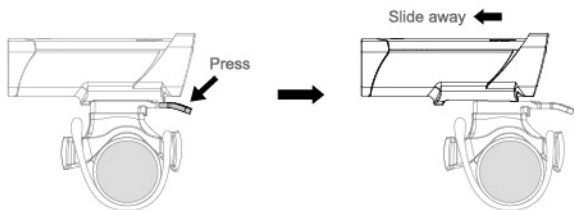
MOUNTING YOUR LIGHT

1. Install the bracket onto your handlebar by fastening the strap ring.
2. Slide the light into the bracket until it clicks into place.



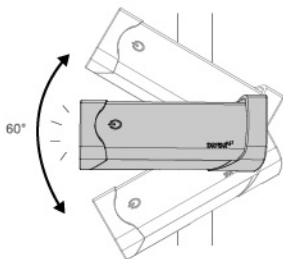
LIGHT REMOVAL

Press the release tab and slide the light away from the bracket.



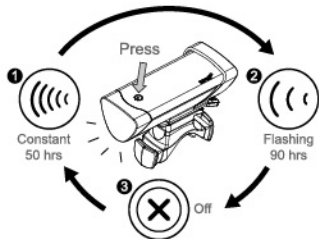
ILLUMINATION ANGLE

60° Maximum illumination angle



TO SWITCH MODES

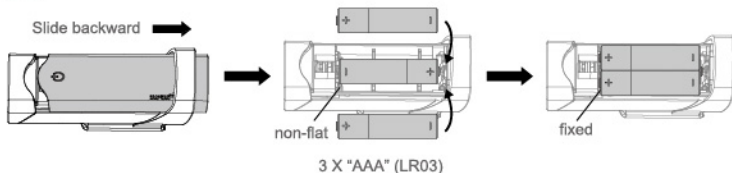
Press the button on the top of the light.



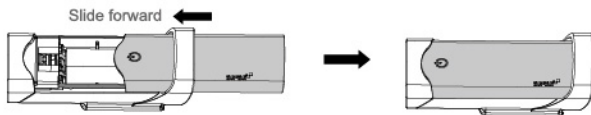
BATTERY INSTALLATION

Slide the top cover backward and install new 3 X "AAA" (LR03) batteries according to the diagram shown on the bottom of the case.

*Only a battery in the bottom is non-flat, you should finish to install another two batteries to fix.

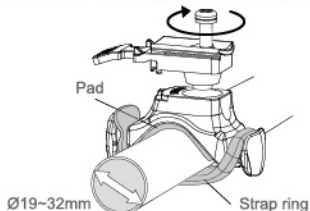


Slide the top cover forward in position.



BRACKET

HB08, Ø19mm~Ø32mm, with 1 rubber pad and 1 strap ring.



SPECIFICATIONS

Size: 83 X 36.5 X 31 mm
 Weight: 24.5g (without battery)
 LED: 5 White LEDs
 Battery: 3 X AAA (LR03)

Caution:

- Carefully install batteries, insuring proper polarity.
- For best performance, do not mix new and old batteries.
- For your own safety, please do not operate the controls of the product while riding.



MADE IN TAIWAN

Manufactured by: Chance Good Ent. Co., Ltd.
 Quality System Registered to: ISO 9001 / 14001
 Website: www.infini.com.tw



A61105W1616