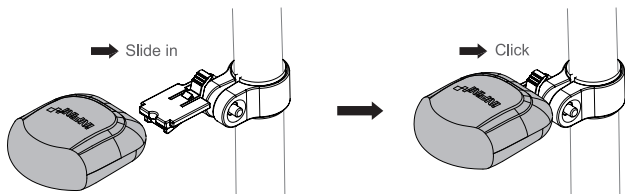


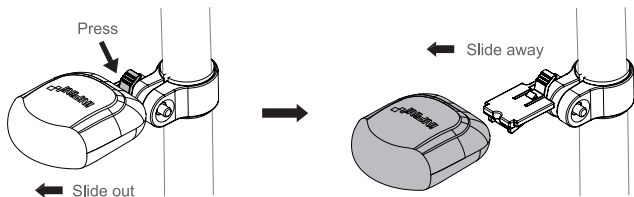
## MOUNTING YOUR LIGHT

1. Install the bracket onto your seat post or seat stay.
2. Slide the light into the bracket until it clicks into place.



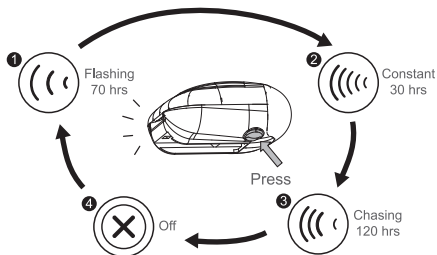
## LIGHT REMOVAL

Press the release tab and slide the light away from the bracket.



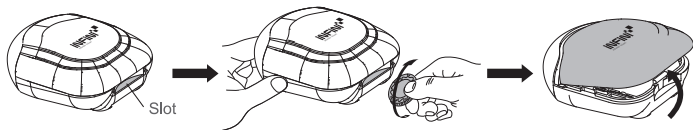
## TO SWITCH MODES

Press the button on the bottom of the light.

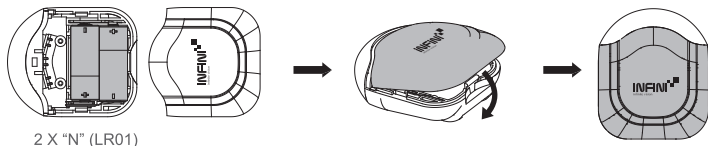


## BATTERY INSTALLATION

Remove the lens by placing a coin in the side slot and twist until the two sides separate.

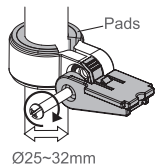


Install new 2 X "N" (LR01) batteries into main unit and snap the two sides together.



## BRACKET

RB02, Ø25mm~Ø32mm, with 1 rubber pad.



## SPECIFICATIONS

Size: 53.4 X 45.3 X 24.1 mm  
 Weight: 19.5g (without battery)  
 LED: 3 Red LED  
 Battery: 2 X N (LR01)

Manufactured by: Chance Good Ent. Co., Ltd.  
 Quality System Registered to: ISO 9001 / 14001  
 Website: [www.infini.com.tw](http://www.infini.com.tw)



Caution:  
 Use only the specified type of batteries.  
 DO NOT use old battery with new one

