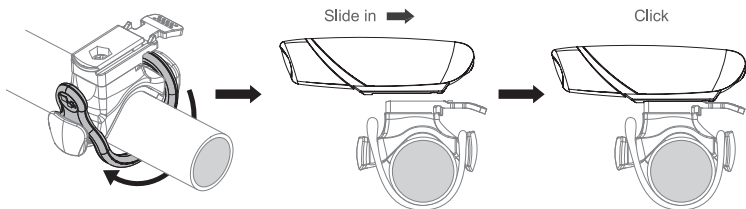


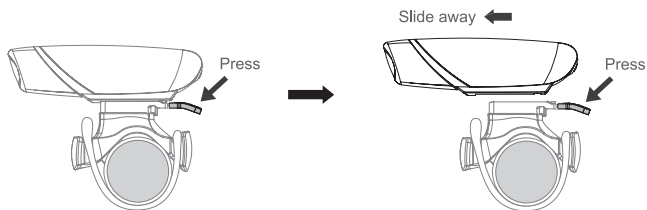
MOUNTING YOUR LIGHT

1. Install the bracket onto your handlebar by fastening the strap ring.
2. Slide the light into the bracket until it clicks into place.

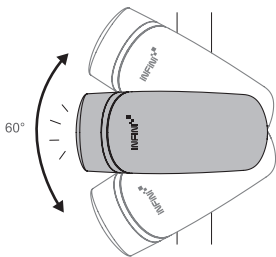


LIGHT REMOVAL

Press the release tab and slide the light away from the bracket.

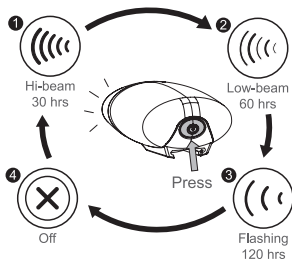


60° Maximum illumination angle



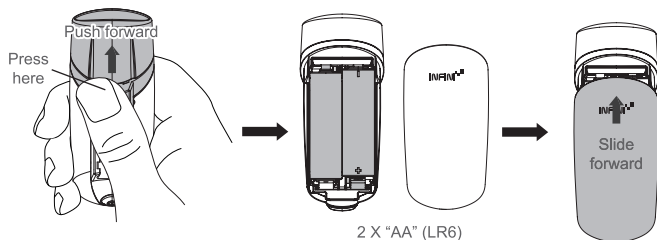
TO SWITCH MODES

Press the button on the end of the light.



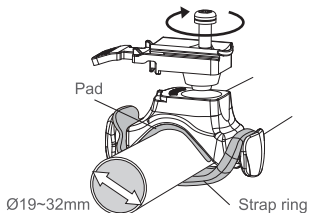
BATTERY INSTALLATION

1. Press and push forward the light to slide the case as the diagram below.
2. Install new 2 X "AA" (LR6) batteries according to the diagram shown on the bottom of the case.
3. Slide the top cover forward in position.



BRACKET

HB08, Ø19mm~Ø32mm, with 1 rubber pad and 1 strap ring.



SPECIFICATIONS

Size: 88.3 X 38 X 26.1 mm
 Weight: 26g (without battery)
 LED: 3 White LED
 Battery: 2 X AA (LR6)

Caution:

1. Use only the specified type of batteries.
2. DO NOT use old battery with new one.
3. For your own safety, please do not operate the controls of the product while riding.

Manufactured by: Chance Good Ent. Co., Ltd.
 Quality System Registered to: ISO 9001 / 14001
 Website: www.infini.com.tw



A6112W1621