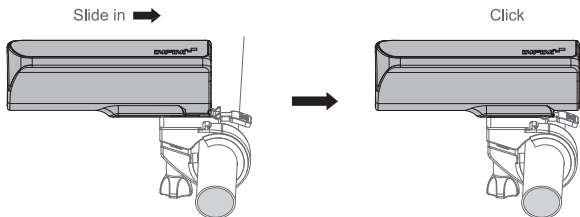


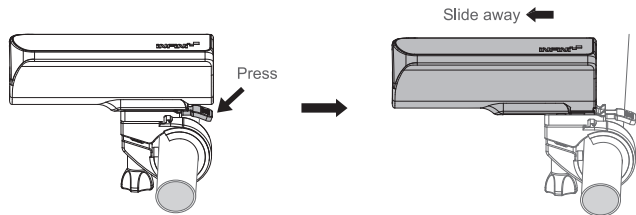
## MOUNTING YOUR LIGHT

1. Install the bracket onto your handlebar.
2. Slide the light into the bracket until it clicks into place.



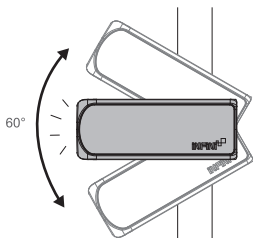
## LIGHT REMOVAL

Press the release tab and slide the light away from the bracket.



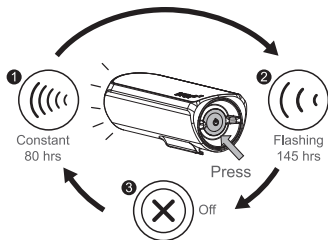
## ILLUMINATION ANGLE

60° Maximum illumination angle



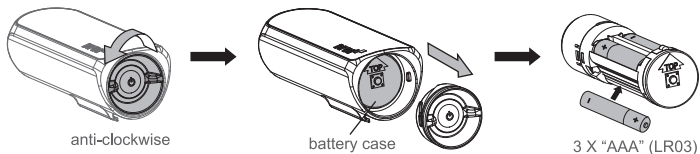
## TO SWITCH MODES

Press the button on the back of the light.

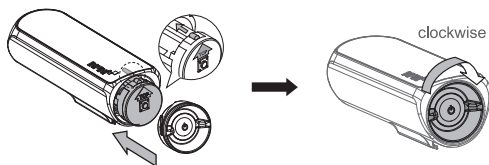


## BATTERY INSTALLATION

Twist anti-clockwise to remove the bottom cover and install new 3 X "AAA" (LR03) batteries according to the diagram shown on the bottom of the case.

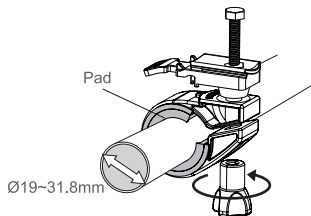


Slide battery cradle into light and align  sign then replace cover and twist clockwise to tighten it.



## BRACKET

HB05, Ø19mm~Ø31.8mm, with 2 rubber pads.



## SPECIFICATIONS

Size: 94.5 X 26 X 25 mm  
 Weight: 60g (without battery)  
 Battery: 3 X AAA (LR03)

Caution:  
 Use only the specified type of batteries.  
 DO NOT use old battery with new one.

Manufactured by: Chance Good Ent, Co., Ltd.  
 Quality System Registered to: ISO 9001 / 14001  
 Website: [www.infini.com.tw](http://www.infini.com.tw)

