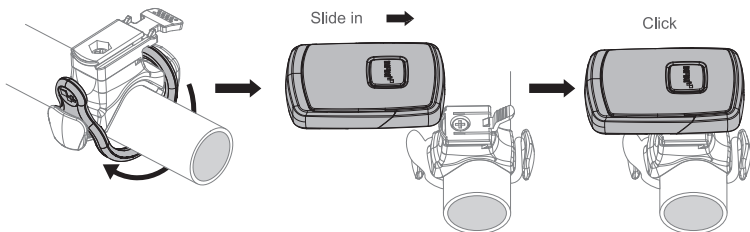


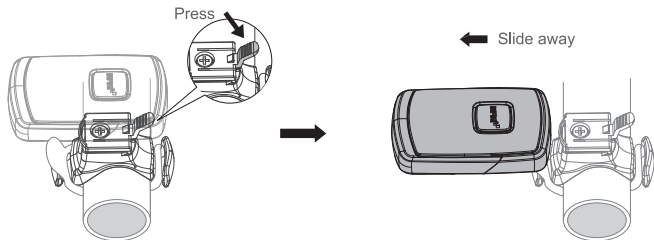
MOUNTING YOUR LIGHT

1. Install the bracket onto your handlebar.
2. Slide the light into the bracket until it clicks into place.



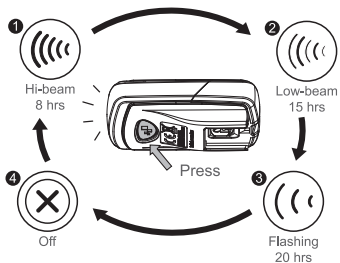
LIGHT REMOVAL

Press the release tab and slide the light away from the bracket.



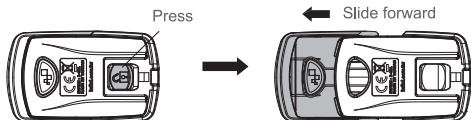
TO SWITCH MODES

Press the button on the bottom of the light.

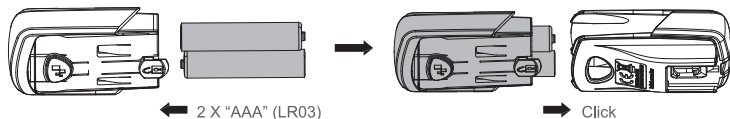


BATTERY INSTALLATION

Press the button on the bottom and slide the case forward.

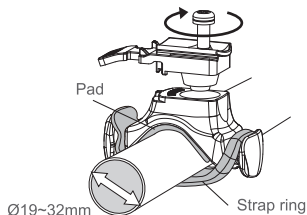


1. Install new 2 X "AAA" batteries according to the polarity marking as on the case.
2. Slide the case into the main unit until it clicks into place.



BRACKET

FB03, Ø19mm~Ø32mm.



SPECIFICATIONS

Size: 68.8 X 41.6 X 24.2 mm
 Weight: 30g (without battery)
 LED: 0.5 Watt White LED
 Battery: 2 X AAA (LR03)

Caution:
 Use only the specified type of batteries.
 DO NOT use old battery with new one

Manufactured by: Chance Good Ent. Co., Ltd.
 Quality System Registered to: ISO 9001 / 14001
 Website: www.infini.com.tw

