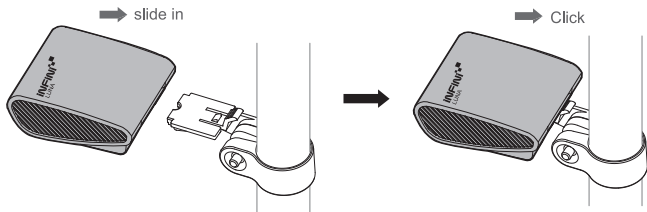


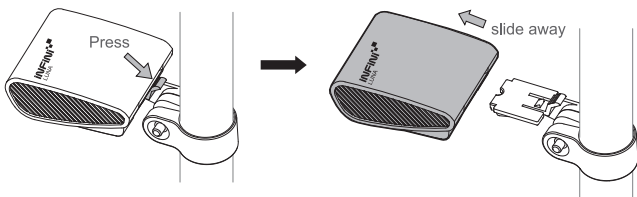
### MOUNTING YOUR LIGHT

1. Install the bracket onto your seat post or seat stay.
2. Slide the light into the bracket until it clicks into place.



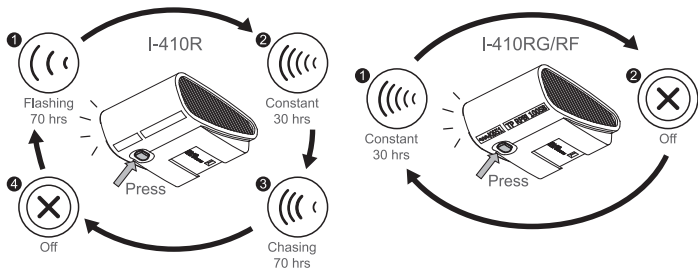
### LIGHT REMOVAL

Press the release tab and slide the light away from the bracket.



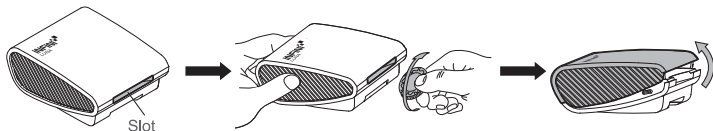
### TO SWITCH MODES

Press the button on the bottom of the light.

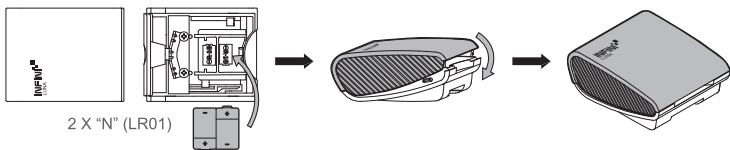


### BATTERY INSTALLATION

Remove the lens by placing a coin in the side slot and twist until the two sides separate.

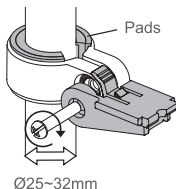


Install new 2 X "N" (LR01) batteries into main unit and snap the two sides together.



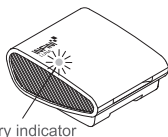
### BRACKET

RB02, Ø25mm~Ø32mm, with 2 rubber pads.



### LOW BATTERY INDICATOR (CG-410RG/RF)

Green light flashes:  
Remaining battery level is low.  
\*Please replace the battery once the low battery indicator shows.



### SPECIFICATIONS

|             |                         |
|-------------|-------------------------|
| I-410R:     | 3 Red LED               |
| I-410RG/RF: | 1 Red LED               |
| Size:       | 56.5 X 50 X 23 mm       |
| Weight:     | 26.5g (without battery) |
| Battery:    | 2 X N (LR01)            |

Manufactured by: Chance Good Ent. Co., Ltd.  
Quality System Registered to: ISO 9001 / 14001  
Website: [www.infini.com.tw](http://www.infini.com.tw)



- Caution:
- We recommend to remove batteries from the light during period of non-use to avoid the battery leakage.
  - For your own safety, please do not operate the controls of the product while riding.
  - Please keep the product out of children's reach.
  - Use only the specified type of batteries.
  - DO NOT use old battery with new one.

