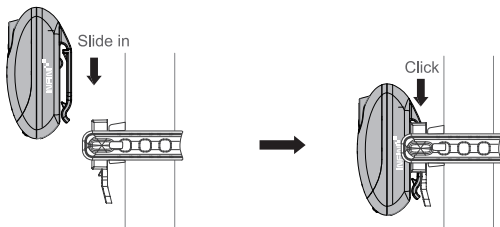


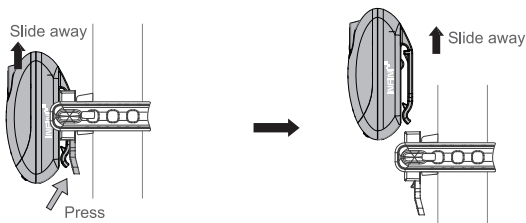
MOUNTING YOUR LIGHT

1. Install the bracket onto your seat post or seat stay.
2. Slide the light into the bracket until it clicks into place.



LIGHT REMOVAL

Press the release tab and slide the light away from the bracket.

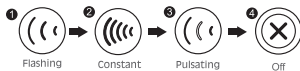


TO SWITCH MODES

Press the button on the bottom of the light.

I-407R

I-407R



Press

I-407RD



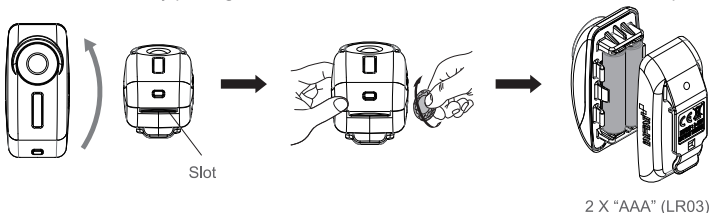
I-407RG



I-407RD : Meets Danish Standard
I-407RG : Meets German Standard

BATTERY INSTALLATION

Remove the lens by placing a coin in the side slot and twist until the two sides separate.

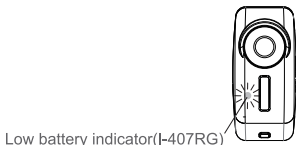


LOW BATTERY INDICATOR (I-407RG)

Green light on:

Remaining battery level is low.

*Please replace the battery once the low battery indicator shows.



SPECIFICATIONS

Size:	66 X 40 X 35 mm
Weight:	30g (without battery)
LED:	I-407R/RD 0.5 watt LED I-407RG 0.12 watt LED
Battery:	2 X AAA (LR03)

Caution:

- We recommend to remove batteries from the light during period of non-use to avoid the battery leakage.
- For your own safety, please do not operate the controls of the product while riding.
- Please keep the product out of children's reach.
- Use only the specified type of batteries.
- DO NOT use old battery with new one.



PRODUCT WARRANTY

INFINI offers a Two-year Limited Warranty from the date of original purchase. Products are warranted to be free from manufacturing defects in materials and workmanship under normal use.

Batteries are covered by 90 days warranty(only for rechargeable light). To obtain warranty service, products should be returned with proof of purchase from an authorized retailer.

