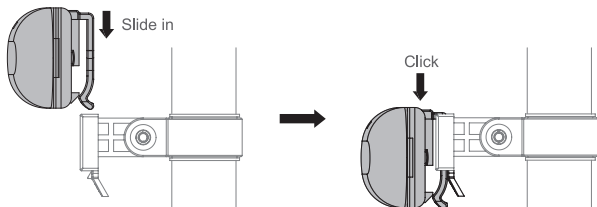


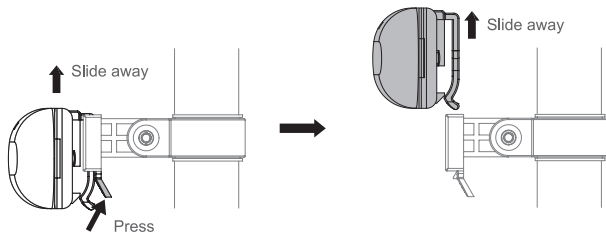
MOUNTING YOUR LIGHT

1. Install the bracket onto your seat post or seat stay.
2. Slide the light into the bracket until it clicks into place.



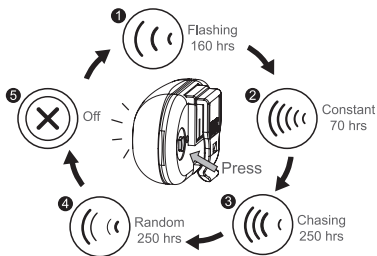
LIGHT REMOVAL

Press the release tab and slide the light away from the bracket.



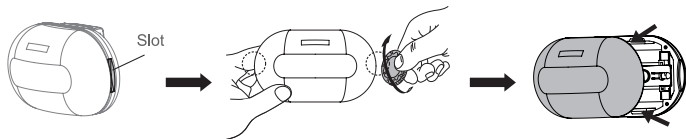
TO SWITCH MODES

Press the button on the back of the light.

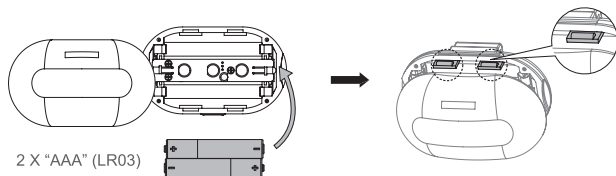


BATTERY INSTALLATION

Remove the lens by placing a coin in the side slot and twist until the two sides separate.

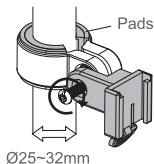


Install new 2 X "AAA" (LR03) batteries into main unit and snap the two sides together.



BRACKET

RB01, Ø25mm~Ø32mm, with 2 rubber pads.



SPECIFICATIONS

| | |
|-----------|--|
| Size: | 66 X 40 X 35 mm |
| Weight: | 24.5g (without battery) |
| LED: | 5 Red LED |
| Battery: | 2 X AAA (LR03) |
| Optional: | RC01, Ø14~Ø18 (Seatstay clamp) not included |

Manufactured by: Chance Good Ent. Co., Ltd.
Quality System Registered to: ISO 9001 / 14001
Website: www.infini.com.tw



Caution:
Use only the specified type of batteries.
DO NOT use old battery with new one

