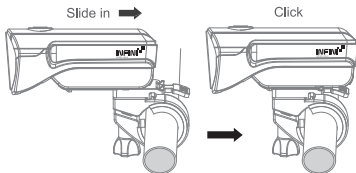


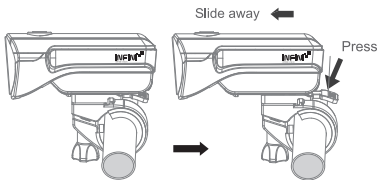
### MOUNTING YOUR LIGHT

1. Install the bracket onto your handlebar by fastening the strap ring.
2. Slide the light into the bracket until it clicks into place.

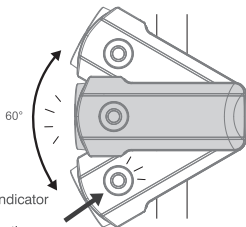


### LIGHT REMOVAL

Press the release tab and slide the light away from the bracket.



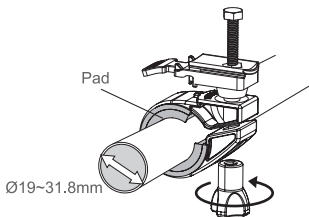
60° Maximum illumination angle



\*Low battery indicator (I-320PG)  
Please replace the battery once the low battery indicator shows.

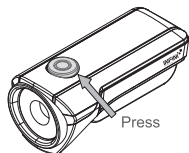
### BRACKET

Fit  $\varnothing 19\text{mm} \sim \varnothing 31.8\text{mm}$ , with 2 rubber pads.

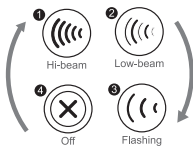


### TO SWITCH MODES

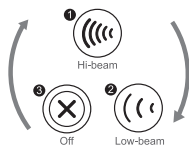
Press the button on the end of the light.



#### I-320P/I-320PD



#### I-320PG

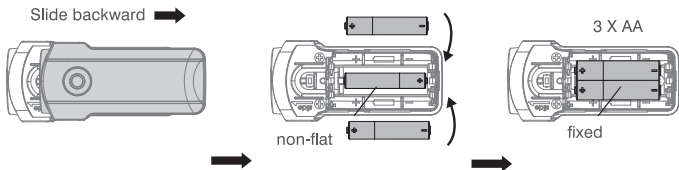


**I-320PD** Meets Danish Standard

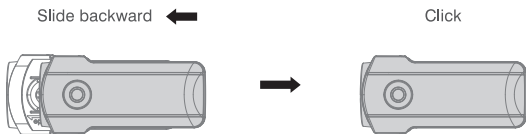
**I-320PG** Meets German Standard

### TO INSERT BATTERIES

To insert batteries, slide backward the cover then insert new 3 X "AA" batteries. Only a battery in the bottom is non-flat, you should finish to install another two batteries to fix.



When the cover aims at the mark "Slide" you should push it forward to the light unit, until they "CLICK" seal closely.



### SPECIFICATIONS

Size:	88 × 42 × 39 mm
Weight:	40 g (without battery)
LED:	I-320P Hi-Power LED I-320PG / I-320PG
Battery:	1 Hi Power LED 3 X AA (LR06)

#### Caution:

1. Use only the specified type of batteries.
2. DO NOT use old battery with new one.
3. For your own safety, please do not operate the controls of the product while riding.



### PRODUCT WARRANTY

INFINI offers a Two-year Limited Warranty from the date of original purchase. Products are warranted to be free from manufacturing defects in materials and workmanship under normal use. Batteries are covered by 90 days warranty (only for rechargeable light). To obtain warranty service, products should be returned with proof of purchase from an



A6I320P1612