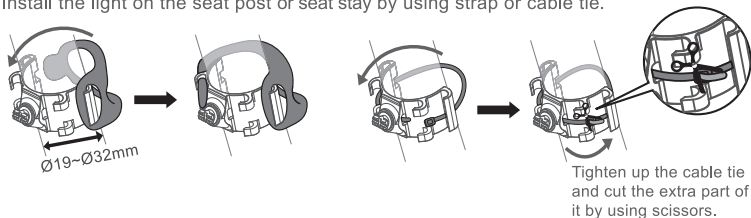
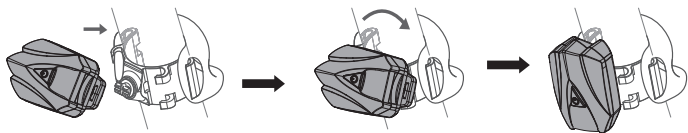


MOUNTING YOUR LIGHT

Install the light on the seat post or seat stay by using strap or cable tie.

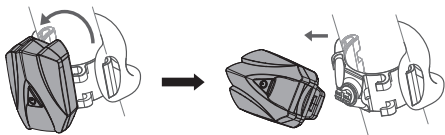


When the light and bracket is in horizontal condition, install the light on the bracket and twist it in the position of 90° and fasten it.



LIGHT REMOVAL

Twist the light in the direction of right and left into 90° and remove it from bracket.

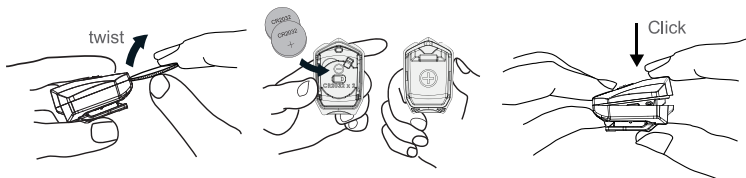


BATTERY INSTALLATION

1. Open

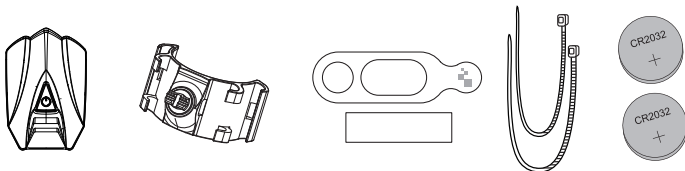
2. Install (CR2032 x 2)

3. Close



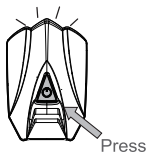
COMPONENTS

Light / bracket / pad / ring / cable tie x 2 / CR2032x 2



TO SWITCH MODES

Press the button on the front of the light.



SPECIFICATIONS

Size:	42 X 28 X 23 mm
Weight:	17g (without battery)
LED:	1 Red LED
Battery:	CR2032 X 2



PRODUCT WARRANTY

INFINI offers a Two-year Limited Warranty from the date of original purchase. Products are warranted to be free from manufacturing defects in materials and workmanship under normal use. Batteries are covered by 90 days warranty (only for rechargeable light). To obtain warranty service, products should be returned with proof of purchase from an authorized retailer.

Caution:

1. We recommend to remove batteries from the light during period of non-use to avoid the battery leakage.
2. For best performance, do not mix new and old batteries.
3. Carefully install batteries, insuring proper polarity.
4. For your own safety, please do not operate the controls of the product while riding.



Manufactured by: Chance Good Ent. Co., Ltd.
Quality System Registered to: ISO 9001 / 14001
Website: www.infini.com.tw

A6I260RB1612

