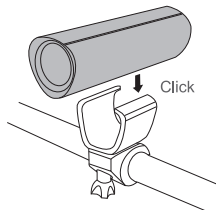


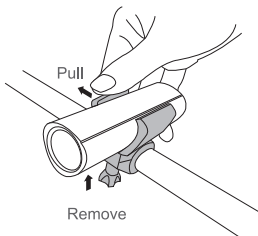
### MOUNTING YOUR LIGHT

Mount the bracket to the handlebar, put the headlight onto the bracket.



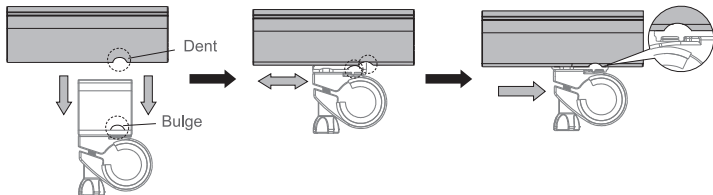
### LIGHT REMOVAL

Pull one side of the bracket and then take the light off the bracket.



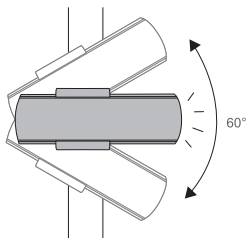
### LIGHT POSITION ADJUSTMENT

Please adjust the light to be sure the dent and the bulge integrate.



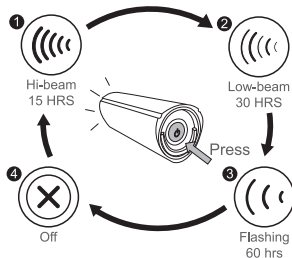
### ILLUMINATION ANGLE

60° Maximum illumination angle



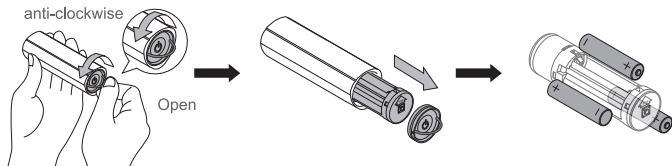
### TO SWITCH MODES (I-109P)

Press the button on the end of the light.

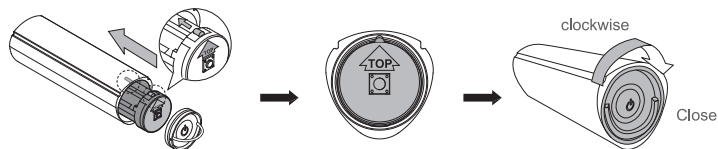


### BATTERY INSTALLATION

Twist anti-clockwise to remove the bottom cover and install new 3 X "AAA" (LR03) batteries according to the diagram shown on the bottom of the case.

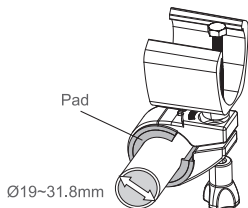


Slide battery cradle into light and align  then replace cover and twist clockwise to tighten it.



### BRACKET

HB04, Ø19mm~Ø31.8mm, with 2 rubber pads.



### SPECIFICATIONS

Size: 96 X 33 X 33 mm  
 Weight: 95.5g (without battery)  
 Battery: 3 X AAA (LR03)  
 Accessories: Strap

Caution:  
 Use only the specified type of batteries.  
 DO NOT use old battery with new one.

Manufactured by: Chance Good Ent. Co., Ltd.  
 Quality System Registered to: ISO 9001 / 14001  
 Website: [www.infini.com.tw](http://www.infini.com.tw)

