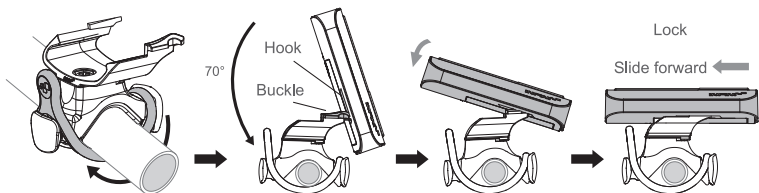


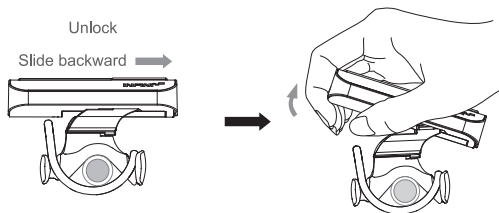
MOUNTING YOUR LIGHT

1. Mount the bracket onto handlebar and adjust the headlight at an inclined angle.
2. Please adjust the headlight at an inclined angle (70°) and make sure the groove and hook are fastened.
3. To lock the light firmly, slide the main body forward after mount onto the bracket.



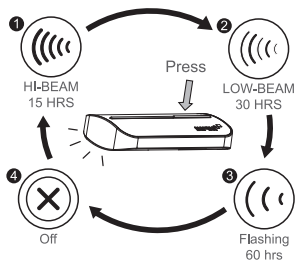
LIGHT REMOVAL

1. Unlock the light by sliding it backward.
2. Hold the headlight firmly in hand and pull it upward until it fully away from the bracket.



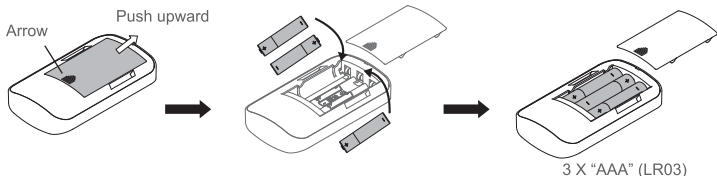
TO SWITCH MODES

Press the button on the top of the light.

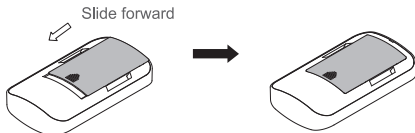


BATTERY INSTALLATION

1. Follow the direction of arrow and push upward to remove the battery case.
2. Carefully insert batteries according to the correct polarity.

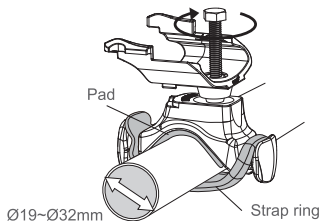


Slide the top cover forward in position.



BRACKET

HB06, Ø19mm~Ø32mm, with 1 rubber pad and 1 strap ring.



SPECIFICATIONS

Size: 85 X 50 X 18 mm
 Weight: 43.5g (without battery)
 LED: 1 Watt white LED
 Battery: 3 X AAA (LR03)

Caution:
 Use only the specified type of batteries.
 DO NOT use old battery with new one

Manufactured by: Chance Good Ent, Co., Ltd.
 Quality System Registered to: ISO 9001 / 14001
 Website: www.infini.com.tw

